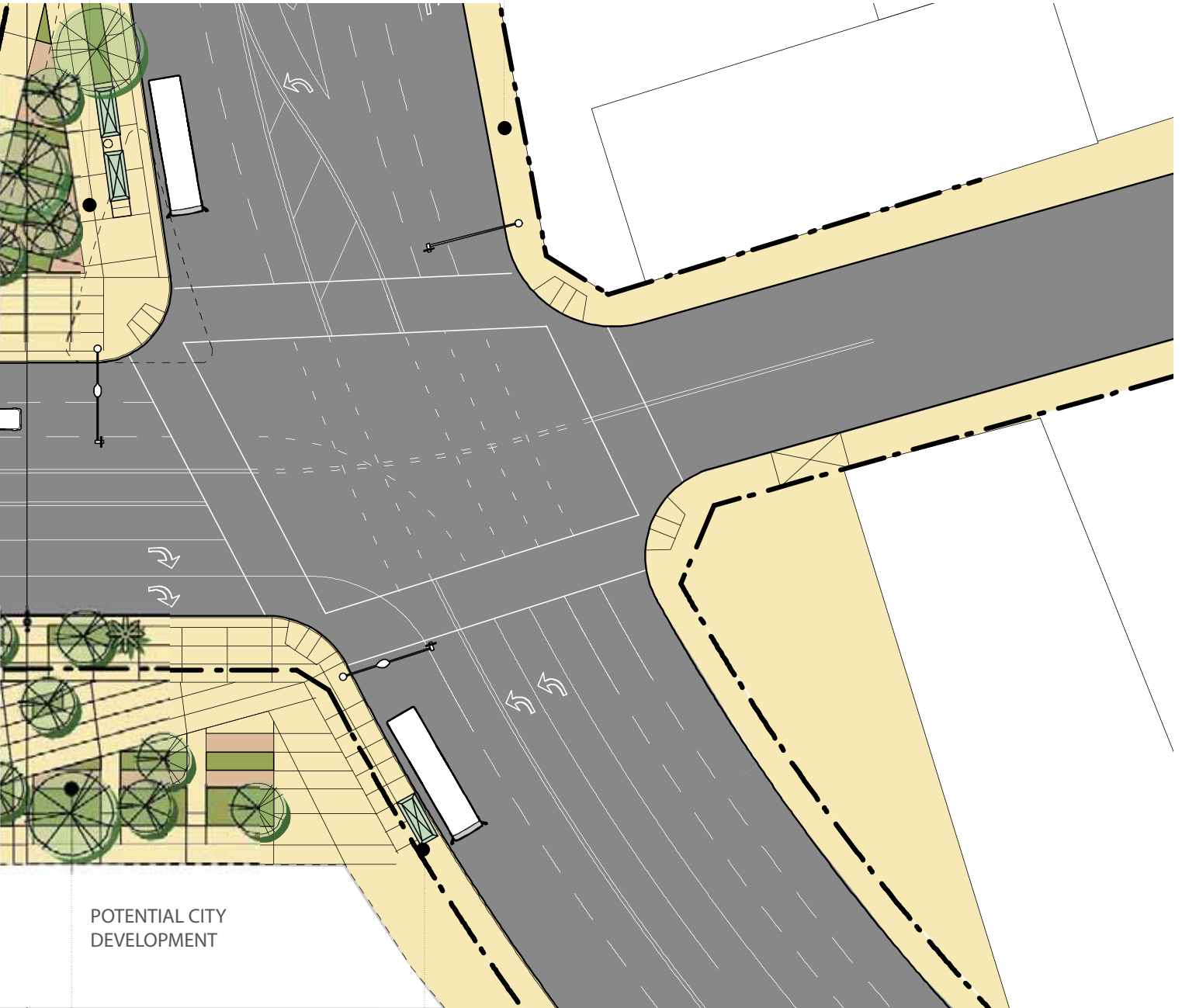


# Plan - Spring Street

Reconfiguration of traffic island & street realignment for proposed "Chinatown / Pueblo Gateway Garden" at north end of block as identified in CRA/LA Cesar Chavez Transit-Oriented Corridor Streetscape Plan with possible new Red Line Metro stop and enhanced bus stop gardens.

Streetscape enhancements on Cesar Chavez Boulevard to conform to CRA/LA Cesar Chavez Transit-Oriented Corridor Streetscape Plan including enhanced bus stop gardens, potential median island locations, decorative street lights, trees, parkways, street furniture, art, enhanced crosswalks, and pocket parks.

## CESAR CHAVEZ BOULEVARD



POTENTIAL CITY DEVELOPMENT

Proposed garden/pocket park to commemorate approximate location of original Los Angeles Plaza and old historic Sonoratown.

Enhanced Metro Rapid stop to include map, signage, lighting, gate canopy, paving, and landscaping per Metro Rapid Expansion Program.



# Plan - Main Street

Design of parkways and large tree wells to collect and treat stormwater runoff is encouraged -both sides of street - per Downtown Design Guidelines.

Tree wells - minimum 24" box trees shall be planted in 5' wide X 8' or larger tree wells set back 2' from face of curb planted with low-growing groundcover or perennials, except within 4 feet of the trunk or covered with 3" thick layer of stabilized decomposed granite or covered by a tree grate per Guidelines

FIRST STREET



Match established historic street light style and pattern

Proposed tree planting in CALTRANS courtyard

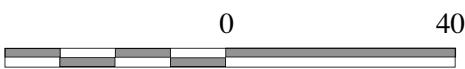
Proposed sidewalk widening to realign with curb edge at mid block

A vibrant Civic Square in the green space known as City Hall Park, with seating, lighting, cafe pavillion, fountains, art, improved links, and other amenities for pedestrians and transit users.

### FIRST STREET



Enhanced bus stop facilities to include, new bus shelters, lighting, landscaping, signage and maps.



# Plan - Main Street

Proposed staggered street tree pattern - spacing 22' o.c. (not more than 25' o.c.)



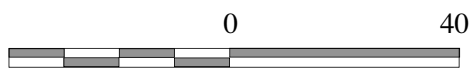
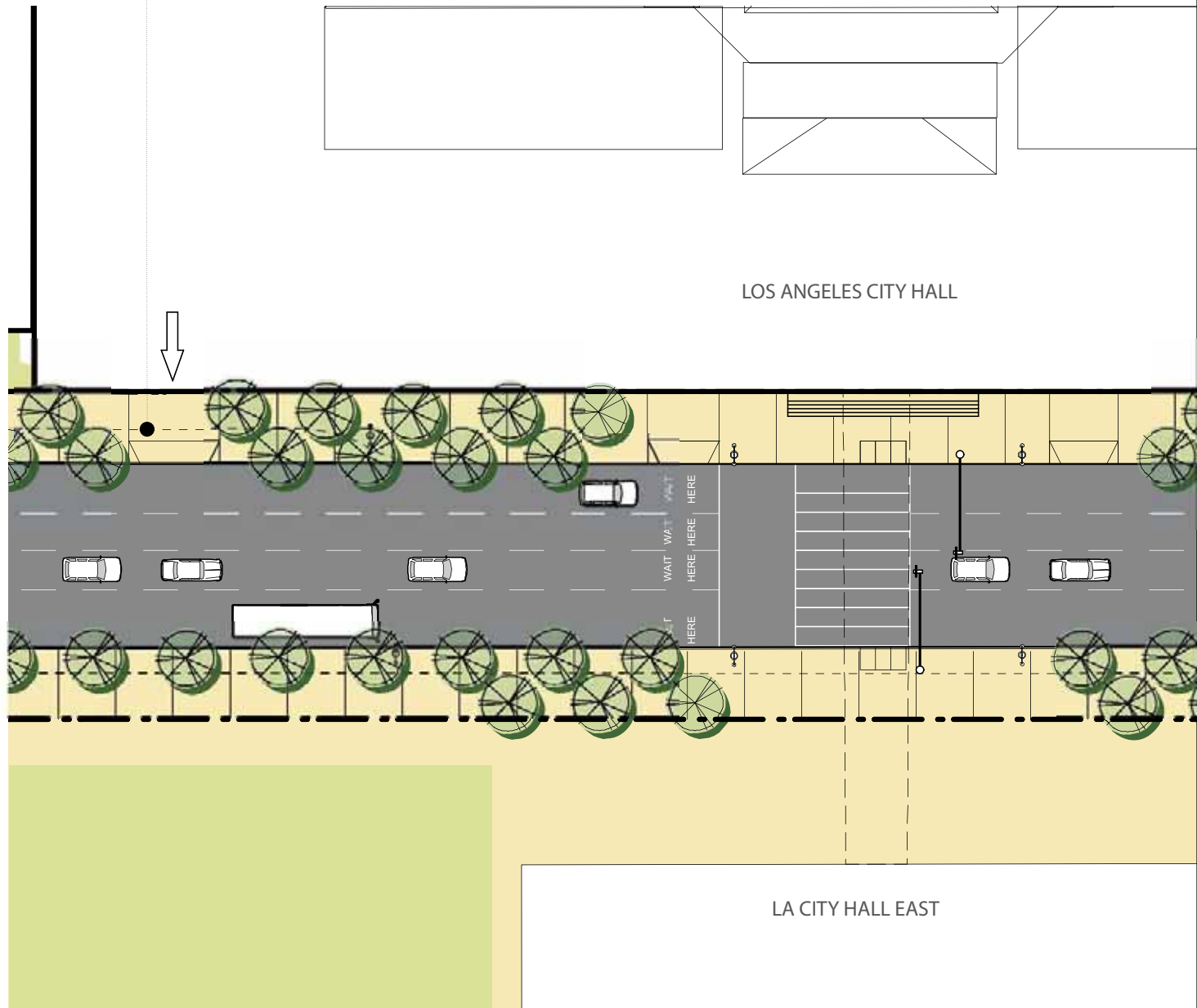
LOS ANGELES CITY HALL

Tree wells - minimum 24" box trees shall be planted in 5' wide X 8' or larger tree wells set back 2' from face of curb planted with low-growing groundcover or perennials, except within 4 feet of the trunk or covered with 3" thick layer of stabilized decomposed granite or covered by a tree grate per Guidelines

Design of parkways and large tree wells to collect and treat stormwater runoff is encouraged Per Downtown Design Guidelines



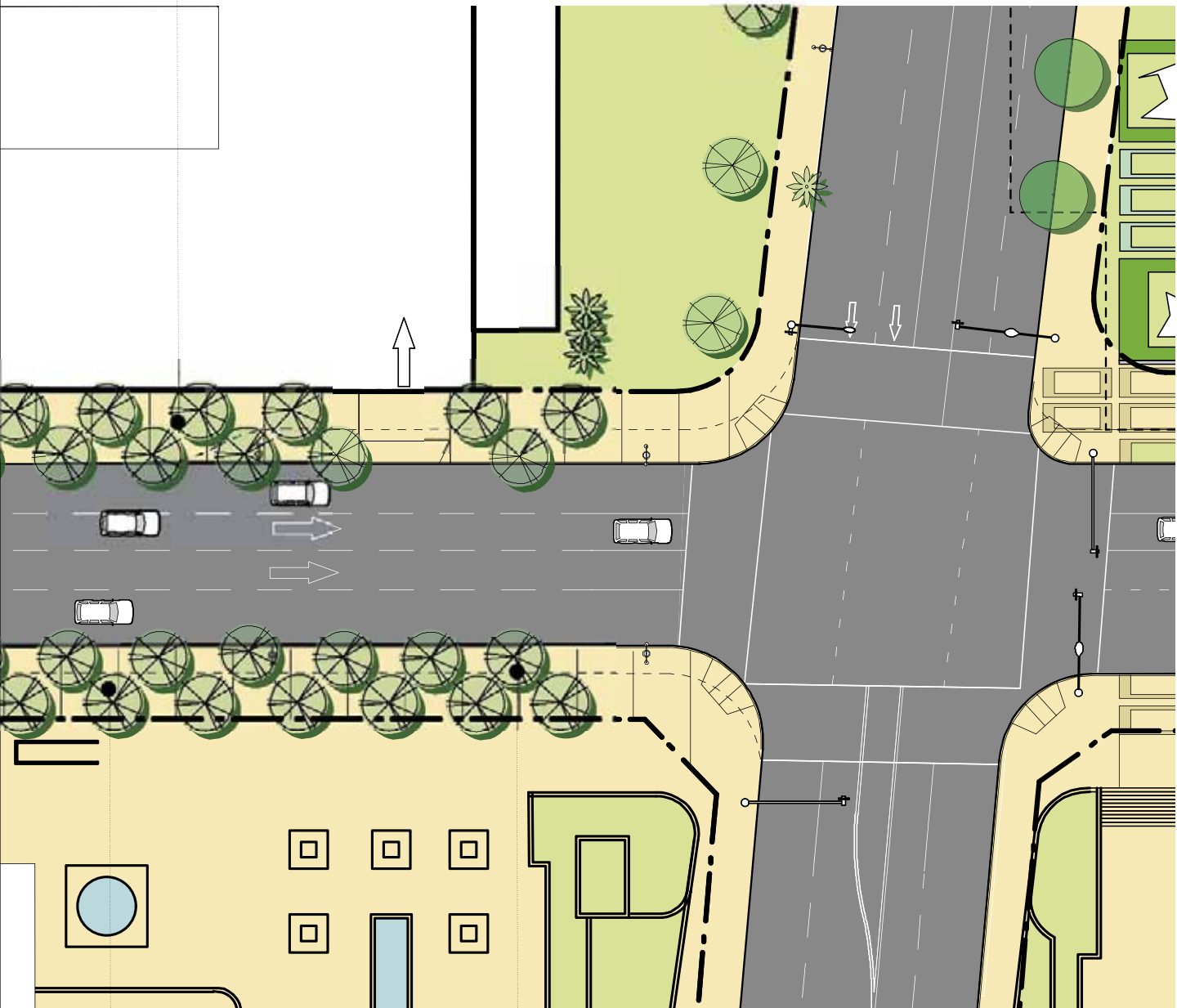
Proposed sidewalk widening  
to realign with curb edge at  
mid block



# Plan - Main Street

Proposed staggered street tree pattern - spacing 22' o.c. (not more than 25' o.c.)

TEMPLE STREET



Tree wells - minimum 24" box trees shall be planted in 5' wide X 8' or larger tree wells set back 2' from face of curb planted with low-growing groundcover or perennials, except within 4 feet of the trunk or covered with 3" thick layer of stabilized decomposed granite or covered by a tree grate per Guidelines

Design of parkways and large tree wells to collect and treat stormwater runoff is encouraged Per Downtown Design Guidelines

Proposed sidewalk widening  
as part of site security  
recommendations

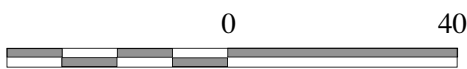
TEMPLE STREET

U.S. COURT HOUSE



East side of this section of Main is designated retail street with the west side designated parkway street per Downtown Design Guidelines. Average sidewalk width of 18' (15' minimum)- Paving pattern: Specified standard CRA/LA edge band.

A recent call has been made for the redesign of Los Angeles Mall. Bringing mall activity to the street level is encouraged and should be a priority.

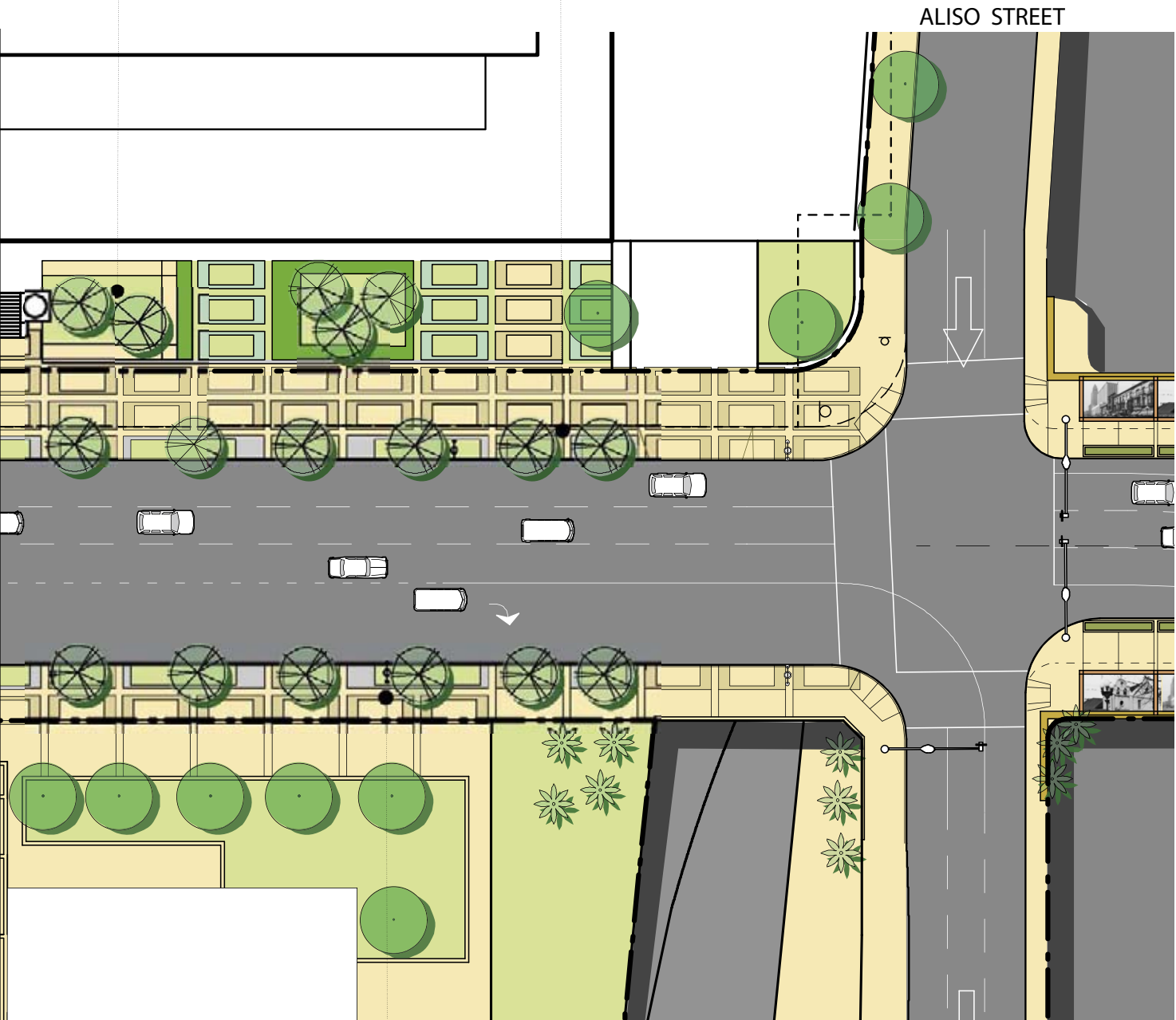




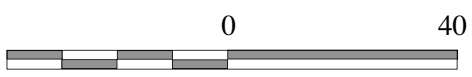
# Plan - Main Street

Proposed possible landscape design enhancements that incorporate security methods and strategies such as sculptural or seating barriers, topography, dry moats, collapsible surfaces, water, & tree spacing, bollards & planting while providing a better work environment.

Design of parkways and large tree wells to collect and treat stormwater runoff is encouraged -both sides of street - per Downtown Design Guidelines. Incorporate with Homeland Security Improvements and funding.



Match established historic street light style and pattern



# Plan - Main Street



Extend El Pueblo's Boundary South to Aliso Street, incorporating the Freeway Bridges. Develop Gateway "Galerías" that include planters, shade structure, sound barriers, lighting, and canvas art on Both Sidewalks of Main Street and Spring Street bridges while developing preliminary planning for three potential lids over the 101 freeway

Proposed curb extension and sidewalk widening which improves pedestrian links to El Pueblo and Civic Center and allows for on street parking

Proposed Republic Street Extension to Spring Street as part of La Plaza De Cultura y Artes development .  
Proposed renaming to Sonora Street.

ARCADIA STREET

REPUBLIC (SONORA) STREET

PROPOSED DISTRICT PARKING & MIXED USE DEVELOPMENT

LA PLAZA DE CULTURA Y ARTES



Match established historic street light style and pattern

This section of Main is designated parkway street per Downtown Design Guidelines. Proposed change in designation to retail street due to potential city and county development sites. Average sidewalk width of 18' (15' minimum)- Paving pattern: Specified standard CRA/LA edge band.

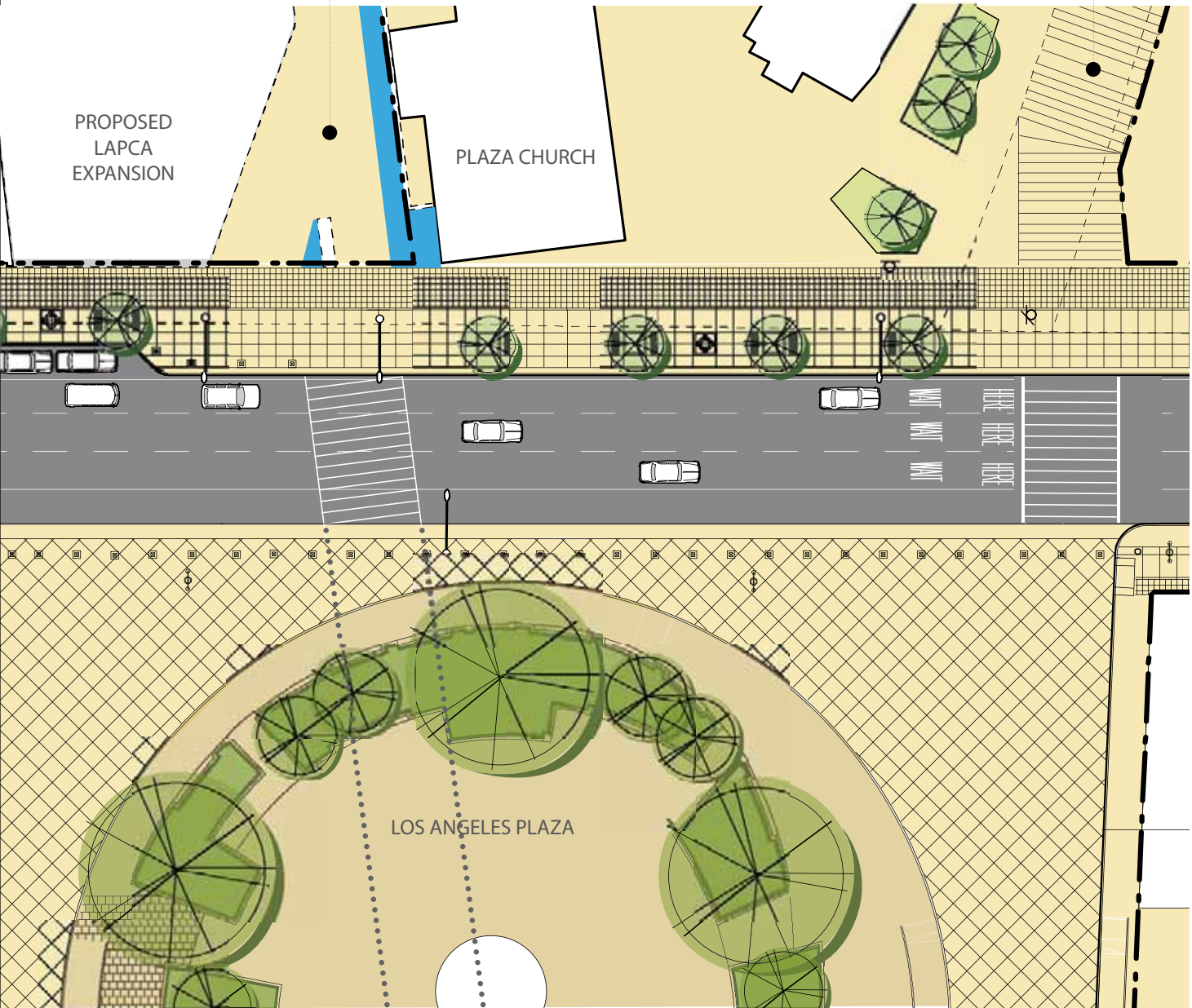
Streetscape enhancements on West side of street to match recently completed enhancements on East side of street including paving, trees, furnishings, lighting, signage, and historic narrative landscape elements.



# Plan - Main Street

Proposed curb extension and crosswalk **Pasaje de La Plaza** - a new pedestrian link from west side of Hill Street (bus stops) to the Plaza. Anticipate district parking to west of Spring and also west of Broadway.

Proposed enhanced pedestrian walkway on old Church Street / Bread Street / Marchessault Street linking Chinatown to the Plaza, Olvera Street and Union Station.





Proposed enhanced pedestrian walkway on old Church Street / Bread Street / Marchessault Street linking Chinatown to the Plaza, Olvera Street and Union Station.

Streetscape enhancements on West side of street to match recently completed enhancements on East side of street including paving, trees, furnishings, lighting, signage, and historic narrative landscape elements.



POTENTIAL CITY DEVELOPMENT

OLVERA STREET SHOPS

Design of parkways and large tree wells to collect and treat stormwater runoff is encouraged -both sides of street - per Downtown Design Guidelines. This section of Main is designated parkway street per Downtown Design Guidelines. Proposed change in designation to retail street due to potential city and county development sites. Average sidewalk width of 18' (15' minimum)- Paving pattern: Specified standard CRA/LA edge band.



# Plan - Main Street

Match established historic street light style and pattern

Proposed curb extension and sidewalk widening which improves pedestrian links within El Pueblo and allows for on street parking.

Enhanced Metro Rapid stop to include map, signage, lighting, gate canopy, paving, and landscaping per Metro Rapid Expansion Program.

## CESAR CHAVEZ BOULEVARD



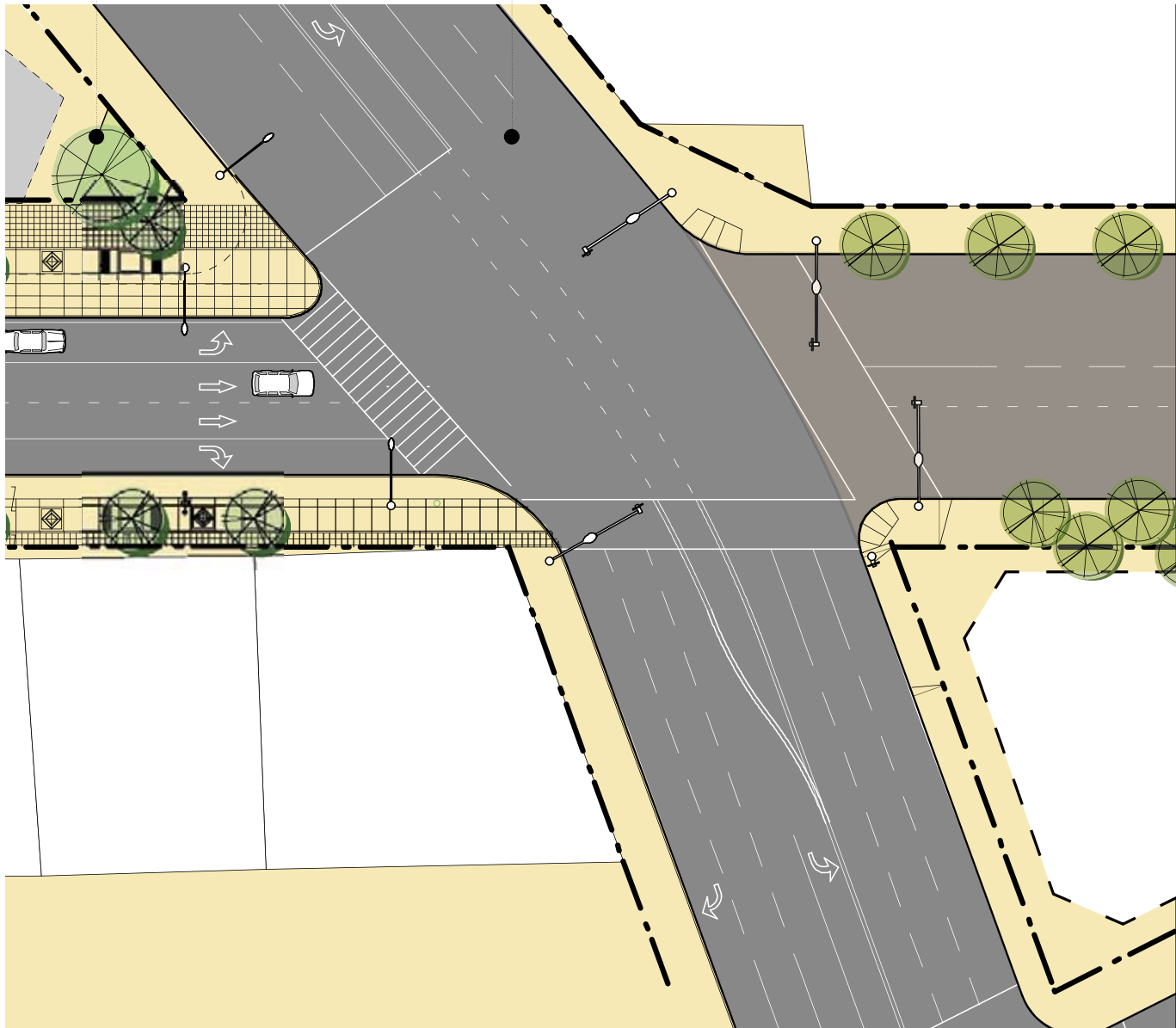
Proposed garden/pocket park to commemorate approximate location of original Los Angeles Plaza and old historic Sonoratown.

Streetscape enhancements on Cesar Chavez Boulevard to conform to CRA/LA Cesar Chavez Transit-Oriented Corridor Streetscape Plan including enhanced bus stop gardens, potential median island locations, decorative street lights, trees, parkways, street furniture, art, enhanced crosswalks, and pocket parks.

Proposed garden/pocket park to commemorate approximate location of original Los Angeles Plaza and old historic Sonoratown.

Streetscape enhancements on Cesar Chavez Boulevard to conform to CRA/LA Cesar Chavez Transit-Oriented Corridor Streetscape Plan including enhanced bus stop gardens, potential median island locations, decorative street lights, trees, parkways, street furniture, art, enhanced crosswalks, and pocket parks.

### CESAR CHAVEZ BOULEVARD



# Plan - Main Street

Per CRA/LA Cesar Chavez Transit-Oriented Corridor Streetscape Plan this report proposes possible relocation of existing gas station. The Chavez plan proposes a public plaza as a gateway to the eastern portion of Chinatown and the State Historic Park beyond. This report encourages the study of an alternative option where a building occupies the site with a Main Street closure to through traffic and designed as the open public space or alternatively left as an open through street.

